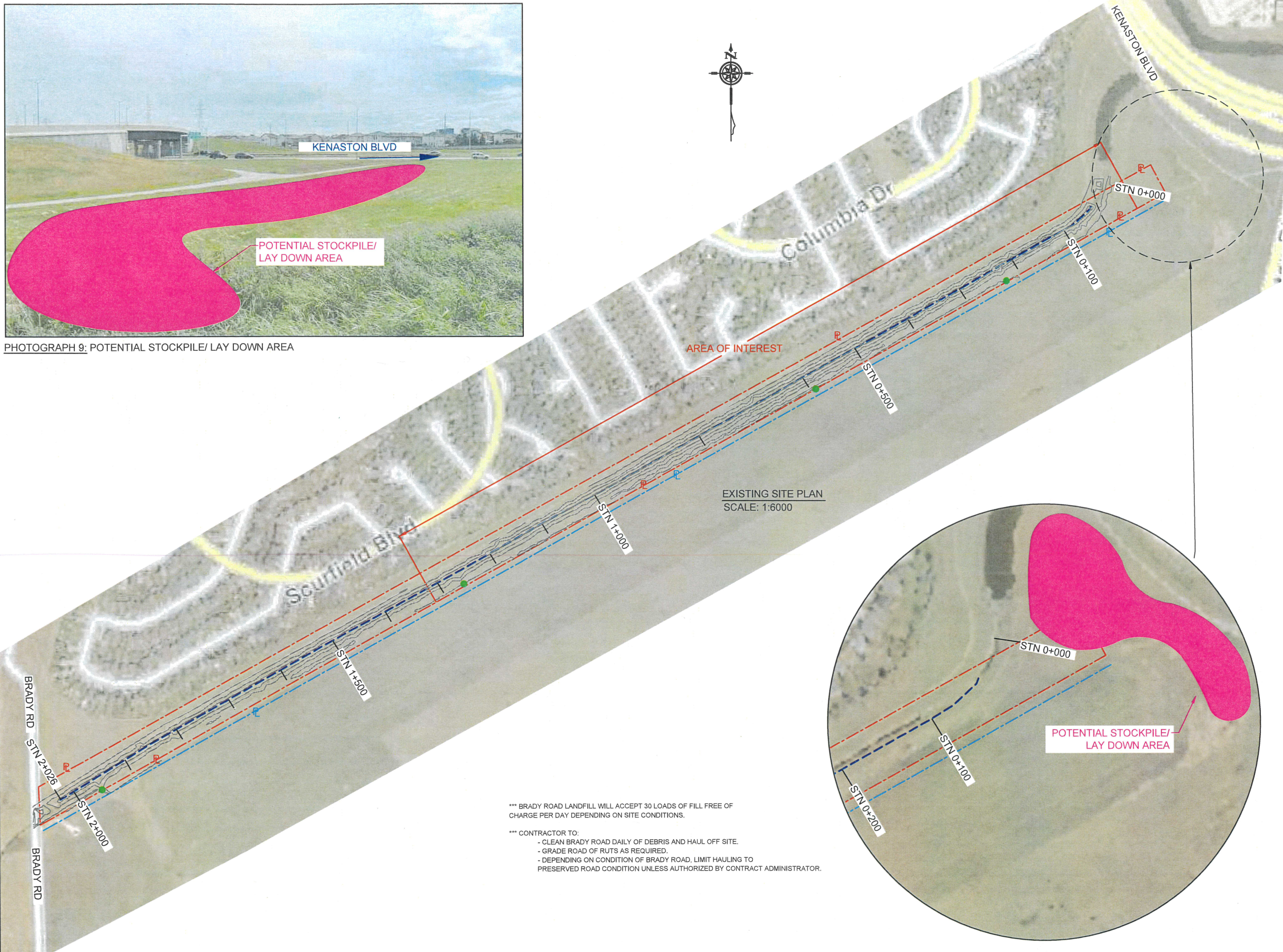


PHOTOGRAPH 9: POTENTIAL STOCKPILE/ LAY DOWN AREA



\*\*\* BRADY ROAD LANDFILL WILL ACCEPT 30 LOADS OF FILL FREE OF CHARGE PER DAY DEPENDING ON SITE CONDITIONS.

\*\*\* CONTRACTOR TO:

- CLEAN BRADY ROAD DAILY OF DEBRIS AND HAUL OFF SITE.
- GRADE ROAD OF RUTS AS REQUIRED.
- DEPENDING ON CONDITION OF BRADY ROAD, LIMIT HAULING TO PRESERVED ROAD CONDITION UNLESS AUTHORIZED BY CONTRACT ADMINISTRATOR.

**LEGEND**

	APPROX. DITCH CENTERLINE
	PROPERTY LINE
	GIS PROPERTY LINE



**NOTES**

- ALL ELEVATIONS ARE IN METERS UNLESS OTHERWISE NOTED.
- ENG-TECH SURVEYED PROPERTY ON APRIL 16 & 24, 2020 AND AUGUST 22, 2022 USING GPS EQUIPMENT.
- CONTOUR INTERVAL = 1.0 m.

NO.	DATE	ISSUE / REVISION
0	Jul. 2024	tender

**ENG-TECH CONSULTING LIMITED**  
 420 Turenne Street  
 Winnipeg, MB R2J 3W8  
 Phone: (204) 233-1694  
 Fax: (204) 235-1579

ENG. STAMP:

**ENGINEERS GEOSCIENTISTS MANITOBA**  
 Certificate of Authorization  
 ENG-TECH Consulting Limited  
 No. 2475

CLIENT: CITY OF WINNIPEG

PROJECT: LOT 16 BANK STABILIZATION

DWG DESCRIPTION: STOCKPILE AREA AND SITE ACCESS PLAN

SCALE: NTS

DRAWN BY: DT DATE: JULY 2024

FILE No.: 20-217-01 CLIENT DWG/FIG. No.:

ENG-TECH DWG/FIG. No.: 7 OF 7 NO.: